

# Preludio in Cm

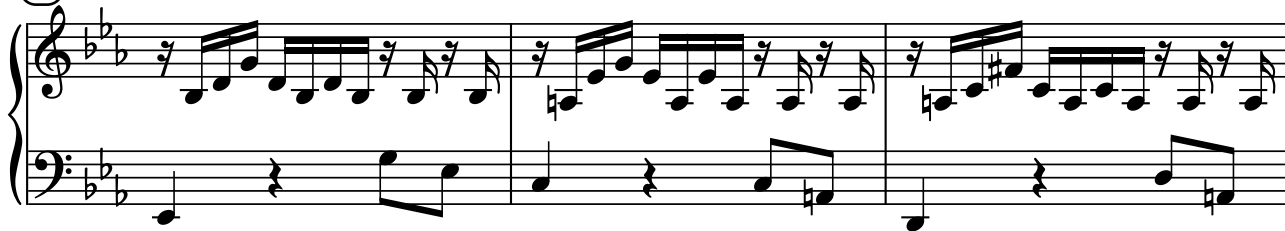
Bwv 999



J.S.Bach



(15)



(18)



(21)



(24)



(27)



30

Measures 30-32 of a piano piece in B-flat major. The right hand features a continuous eighth-note pattern with a melodic line, while the left hand provides a simple harmonic accompaniment with quarter notes and rests.

33

Measures 33-34. The right hand continues the eighth-note pattern, with a slight change in the melodic contour in measure 34. The left hand accompaniment remains consistent.

35

Measures 35-37. The right hand's eighth-note pattern incorporates a sharp (F#) in measure 35, which is sustained through measures 36 and 37. The left hand accompaniment continues with quarter notes and rests.

38

Measures 38-40. The right hand's eighth-note pattern continues, with a sharp (F#) appearing in measure 39. The left hand accompaniment remains consistent.

41

Measures 41-43. The right hand's eighth-note pattern continues, with a sharp (F#) appearing in measure 42. The left hand accompaniment remains consistent. The piece concludes in measure 43 with a final chord in the right hand and a whole note in the left hand.